

Application

Designed to house electrical equipment and provide degree of protection from dirt, dust, oil and water and to house most standard type disconnects. For installation information, consult our installation manual at www.saginawcontrol.com.

Construction

- 0.125" carbon steel.
- Seams continuously welded and ground smooth.
- Flange trough collar around all sides of door opening.
- Body stiffeners in large enclosures for extra rigidity.
- Heavy duty lifting eyes anchor into reinforced top.
- Removable center posts permit easy subpanel installation.
- Concealed hinges.
- Black zinc die cast coinproof/padlocking handle on main door with black zinc die cast padlocking handle on slave doors.
- 3-point latching mechanism.
- Ends of latch rods have ramp shoes for easier door closing.
- Panel supports.
- Large removable print pockets.
- Pour in place oil and water resistant gasket.
- Removable panels mount on collar studs.
- Master door is far right-hand door on all enclosures.
- Defeater on master door requires a screwdriver to open.
- Mechanical interlock activated by master door prevents slave doors from being opened first. Doors can be closed in any order.
- Hole plugs provided to seal holes in bottom of enclosure.
- Ground stud on door and body.
- Provisions for light kit.

Disconnect switch (or circuit breaker) and operating mechanism are not furnished with enclosure.

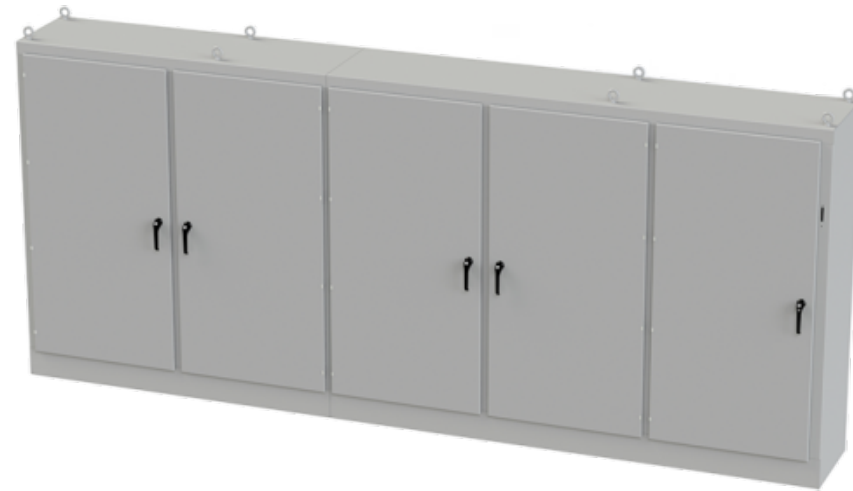
Finish

ANSI-61 gray powder coated inside and out.

IS3 Industry Standards

NEMA Type 3R, 12 & Type 13
UL Listed Type 3R & 12
CSA Type 3R & 12
IEC 60529 IP55

***To maintain Type 3R listing, drainage is required. Install equally rated drainage device or drill a 1/8 to 1/4 inch hole in the bottom center of the enclosure, approximately 1 inch from the right, and 1 inch from the left for drainage, use listed rain-tight or wet location hubs. Drip shield over the door is recommended for all outdoor applications.

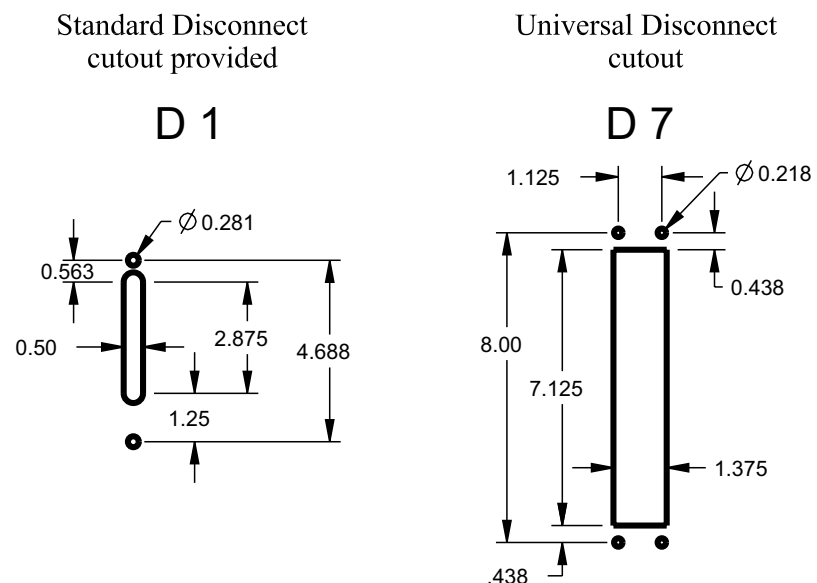


Part numbers ending in "G" have galvanized subpanels installed.

**Subpanel included with enclosure. Replacement subpanels can be ordered.

XM ENCLOSURES

- * Add the letter U to the end of the part number for enclosures with a universal disconnect cutout.



FOUR-DOOR ENCLOSURES

| Enclosure Product Code A2 | | | | | | Subpanel (P3) | | |
|---------------------------|--------------------------------|--------------|------------|-----------|-----------|-------------------------------|------------------|-----------------|
| Catalog No. | | | Height (A) | Width (B) | Depth (C) | Catalog No. | Panel Height (D) | Panel Width (E) |
| SCE-84XM4EW18 | | | 84 | 157.5 | 18 | | | |
| Equals Qty 1 Part# | SCE-84XMR2D18 | 2DR Right XM | 84 | 78.75 | 18 | SCE-76P76 | 72 | 72 |
| Equals Qty 1 Part# | SCE-84XML2D18 | 2DR Left XM | 84 | 78.75 | 18 | SCE-76P76 | 72 | 72 |
| SCE-84XM4EW18G | | | 84 | 157.5 | 18 | | | |
| Equals Qty 1 Part# | SCE-84XMR2D18G | 2DR Right XM | 84 | 78.75 | 18 | SCE-76P76GALV | 72 | 72 |
| Equals Qty 1 Part# | SCE-84XML2D18G | 2DR Left XM | 84 | 78.75 | 18 | SCE-76P76GALV | 72 | 72 |
| SCE-84XM4EW24 | | | 84 | 157.5 | 24 | | | |
| Equals Qty 1 Part# | SCE-84XMR2D24 | 2DR Right XM | 84 | 78.75 | 24 | SCE-76P76 | 72 | 72 |
| Equals Qty 1 Part# | SCE-84XML2D24 | 2DR Left XM | 84 | 78.75 | 24 | SCE-76P76 | 72 | 72 |
| SCE-84XM4EW24G | | | 84 | 157.5 | 24 | | | |
| Equals Qty 1 Part# | SCE-84XMR2D24G | 2DR Right XM | 84 | 78.75 | 24 | SCE-76P76GALV | 72 | 72 |
| Equals Qty 1 Part# | SCE-84XML2D24G | 2DR Left XM | 84 | 78.75 | 24 | SCE-76P76GALV | 72 | 72 |
| SCE-90XM4EW18 | | | 90 | 157.5 | 18 | | | |
| Equals Qty 1 Part# | SCE-90XMR2D18 | 2DR Right XM | 90 | 78.75 | 18 | SCE-82P76 | 78 | 72 |
| Equals Qty 1 Part# | SCE-90XML2D18 | 2DR Left XM | 90 | 78.75 | 18 | SCE-82P76 | 78 | 72 |
| SCE-90XM4EW18G | | | 90 | 157.5 | 18 | | | |
| Equals Qty 1 Part# | SCE-90XMR2D18G | 2DR Right XM | 90 | 78.75 | 18 | SCE-82P76GALV | 78 | 72 |
| Equals Qty 1 Part# | SCE-90XML2D18G | 2DR Left XM | 90 | 78.75 | 18 | SCE-82P76GALV | 78 | 72 |
| SCE-90XM4EW24 | | | 90 | 157.5 | 24 | | | |
| Equals Qty 1 Part# | SCE-90XMR2D24 | 2DR Right XM | 90 | 78.75 | 24 | SCE-82P76 | 78 | 72 |
| Equals Qty 1 Part# | SCE-90XML2D24 | 2DR Left XM | 90 | 78.75 | 24 | SCE-82P76 | 78 | 72 |
| SCE-90XM4EW24G | | | 90 | 157.5 | 24 | | | |
| Equals Qty 1 Part# | SCE-90XMR2D24G | 2DR Right XM | 90 | 78.75 | 24 | SCE-82P76GALV | 78 | 72 |
| Equals Qty 1 Part# | SCE-90XML2D24G | 2DR Left XM | 90 | 78.75 | 24 | SCE-82P76GALV | 78 | 72 |



2DR Left XM



2DR Right XM